

A modern living room interior featuring a large fireplace with a textured, light-colored surround. In the foreground, a low, wide coffee table with a checkered top and thick legs sits on a patterned rug. A white, shaggy armchair with red legs is positioned in the center. To the right, a blue velvet sofa is partially visible. In the background, a wooden bookshelf with open shelves holds books and a blue coat hangs on a wall. The overall aesthetic is warm and contemporary.

Livingetc

February
2025

The joy of lounging

SOFAS, SCHEMES AND STYLE INSPIRATION
FOR LIVING ROOMS TO UNWIND IN

Hotel HOT LIST

Start planning your European sojourn –
we've got sun, ski and city breaks covered





Grand Hotel Central, BARCELONA

IN A SENTENCE

After undergoing a renovation inspired by its storied history, this hotel at the heart of Barcelona is the chic spot in which to set down your bags – rooftop infinity pool, secret garden and all.

DESIGN DOWNLOAD

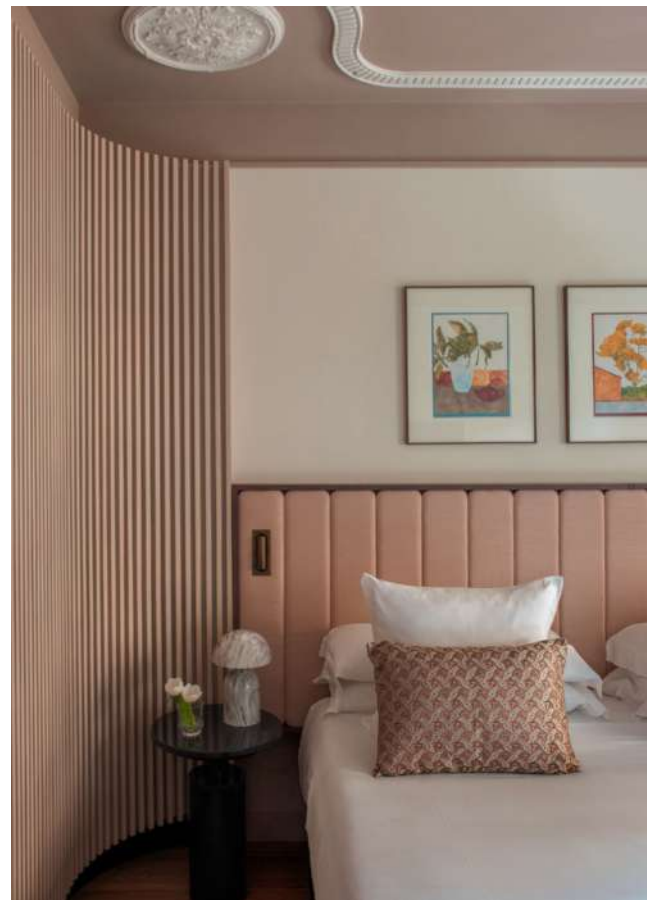
The 1920s building's history, as a private residence created by Spanish politician Francesc Cambó, is preserved in an apartment on the eighth floor, and the rest of the hotel's Catalan Noucentisme-style decor nods to the original features through details like decorative ceiling rosettes and luxurious chaise longues.

ON THE MENU

Restaurant Can Bo opened last year and is set to be a must-visit. Led by chef Oliver Peña, it serves tapas and sharing plates highlighting Catalan produce – and a 150-strong wine selection.

UP TOP

The rooftop is a great place to kick back after a day's sightseeing and enjoy a cocktail or two. Guests can also access the exquisite garden complete with orange trees, flowers and fountains. ➤





Eriksberg Hotel,

TRENSUM, SWEDEN

IN A SENTENCE

A Nordic safari might not have been top of your travel list until now – in fact, you’ve probably never even heard of it – but The Ark at Eriksberg Hotel & Nature Reserve, set in the region’s largest safari park, is about to convince you.

DESIGN DOWNLOAD

The architecture feels appropriate, a timber-clad, cantilevered building set overlooking the property. Inside, everything is designed to bring you closer to nature: suites are themed after mountain, forest and sky, rugs are inspired by clouds and moss.

IN THE GROUNDS

The reason you’re at The Ark is, of course, for safari – and Sweden’s spectacular wildlife thrives here, from European bison to wild boar and moufflon.

ON THE MENU

The hotel’s restaurant has been called the best game restaurant in Sweden – it uses produce from the hotel estate, which means that the menu is centred around only the freshest ingredients.





Hotel Valldemossa, MALLORCA

IN A SENTENCE

Set in the mountains of Mallorca, Hotel Valldemossa by IT Mallorca was conceived as a hub for creativity and wellness, connected to nature – and its design follows suit.

DESIGN DOWNLOAD

Designer Luis Fernández worked with the traditional architecture, so there are plenty of stone walls and deep exposed wood – but combined with furniture inspired by the French mid-century aesthetics. The vibe is rich, warm, layered and comforting – but with that easy, breezy Mallorcan vibe.

THE WELLNESS TWIST

The hotel has its own wellness programme inspired by traditional Chinese medicine and lymphatic drainage – spa menu highlights include algae or clay plaster treatments, massage and reflexology.

ON THE MENU

Restaurant De Tokio a Lima combines Japanese and Peruvian food using fresh Mediterranean ingredients – and the results, like Iberian pork sashimi, sound too delicious to pass up. ➤





Experimental Chalet, VAL D'ISERE

IN A SENTENCE

If the Hedkandi music label (remember them?) did hospitality it would be the Experimental Group. And now, they hit the slopes.

DESIGN DOWNLOAD

This is ski style reinvented – a nod to the cosiness of the Alps but with flame red carpets, graphic prints, marble tops and woven leather chairs. Put simply, it's as cool as you'd expect for a brand that started out with a cocktail bar hidden in London's Soho, branched out to a beach club in Ibiza and now finds itself here.

ON THE SLOPES

The hotel is a ski-in/ski-out, meaning you can be on the 300km slopes in less time than it takes to buckle your boots and clip on your lift pass. Val d'Isere is on a glacier meaning you're guaranteed good snow – even in summer.

DON'T MISS

Of course there is a spa and a pool almost rivalling the slopes in length, but the hotel will also sort out any activity for you. Ice climbing, dogsledding, even paragliding. All in a day's work.



PHOTOGRAPHS (EXPERIMENTAL CHALET) PATRICK LOCQUENEUX;
(IMPERIAL RIDING SCHOOL) CATHERINE STUKHARD



Imperial Riding School, VIENNA

IN A SENTENCE

A new opening from the Autograph Collection that plays on its heritage as a 19th-century imperial military riding school.

DESIGN DOWNLOAD

The hotel has its own quirky character informed by its illustrious past, and even though the property has been extended, grand old architectural features remain as a reminder of what it once was.

EAT AND DRINK

On-site restaurant Elstar is decorated in mirrors and metalwork with seating arranged in niches and booths, so you can enjoy the cosy glamour of it all while you dine on Hungarian crepes and Viennese schnitzel. The Farrier Bar, meanwhile, turns from cool coffee hub by day to sophisticated cocktail spot by night.

IN THE NEIGHBOURHOOD

The hotel is in Landstraße, Vienna's third district, with its baroque Belvedere Palace and colourful Kunst Haus Wien Museum. Visit Rochusmarkt, one of the city's oldest markets, and stroll along the Donaukanal for lively waterfront bars and cafes.



Monument Hotel, ATHENS

IN A SENTENCE

If you've ever fancied staying in a 19th-century neoclassical villa classified as a 'piece of art' by the Greek Ministry of Culture, then you'll love this Athens hotel – it's a seriously sophisticated setting.

DESIGN DOWNLOAD

We love the way the hotel uses its traditional features as inspiration – the bedroom's palettes, for example, are inspired by the colours of the neoclassical ceiling paintings. Modern elements are brought in through Scandinavian furnishings.

THE WELLNESS TWIST

On the lower level of the hotel is a softly lit, beautifully paletted private wellness area with a hammam and sauna, as well as a massage room with a menu of face and body treatments.

IN THE NEIGHBOURHOOD

Step out into Psyrri, one of Athens' most artistic neighbourhoods, and follow the tour curated by the hotel: take in the hottest coffee spots and visit the National Archaeological Museum, Museum of Cycladic Art, Kallimarmaro stadium and the National Garden.